



PONT | PRESPA OHRID
NATURE TRUST

PONT – Using the CTF standards Set-up, design, early operations

info@pont.org - www.pont.org

2020

PRACTICE STANDARDS FOR CONSERVATION TRUST FUNDS

2020 Update by Paquita Bath, Viviana Luján Gallegos, and
Amilcar Guzmán Valladares

Original 2014 Edition by Barry Spergel and Kathleen Mikitin



1. **Governance**
2. **Institutional Effectiveness**
3. **Programs**
4. **Administration**
5. **Asset Management**
6. **Resource Mobilisation**
7. **Risk Management & Safeguards**

Governance



- **Charter (2015) outlines potential growth of PONT (transboundary – Prespa – Ohrid – limited to three countries)**
- **Two-tierd board with duties and responsibilities described in by-laws**
- **Supervisory Board - Legal & investment skills & knowledge of the region**
- **Management Board – Conservation/Social background**
- **Four Supervisory Board meetings per year; signed MoM**
- **Investment Committee under the Supervisory Board**
- **PONT legally established in Germany - most suitable for a transboundary CTF and decision based on a detailed legal study**



Institutional Effectiveness



- Log-frame developed during a thorough feasibility phase
- Strategy (based on studies conducted during the feasibility study)
- Public consultation meetings in the three countries
- Framework agreements with the governments
- Financial Model to simulate projections of income and expenditures
- Close cooperation with other donors (also for co-financing)
- PONT actively updates its website and has a LinkedIn and Facebook page





Vision:

“The transboundary Prespa-Ohrid ecoregion is sustained as one of the world’s most important biodiversity hotspots where people live and work in harmony with nature”

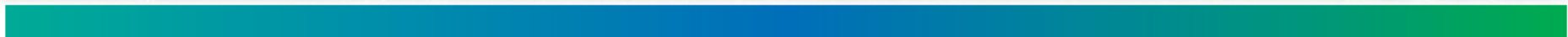
Mission:

“Conserving nature for a sustainable future in the Prespa-Ohrid ecoregion through long-term partnerships and financing”

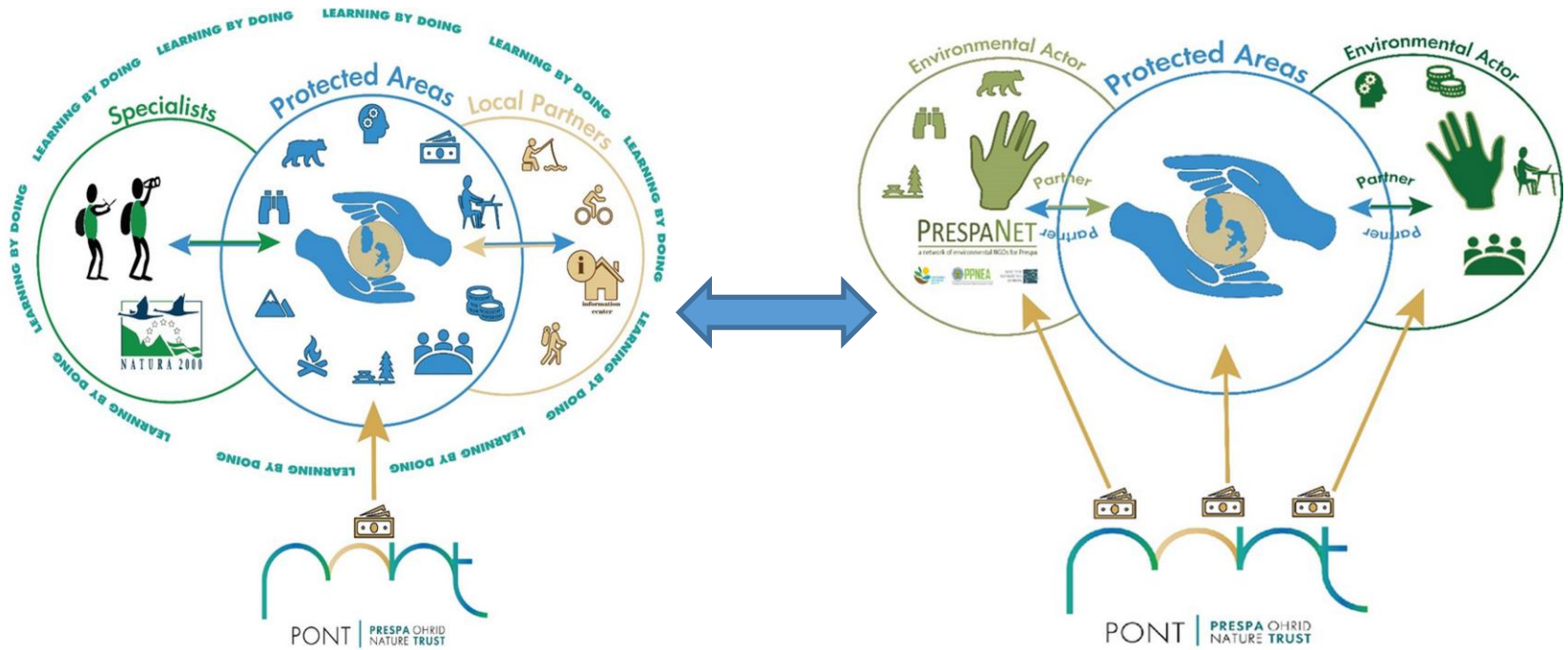
Programs



- Focus PONT identified gaps – operational costs of PAs; lack of LT financing and capacity development for local organisations (PAs; NGOs; local municipalities; research institutes)
- Impact indicators being developed in addition to annual log-frame
- Application templates evaluated by using a scoring card to assure quality; grants criteria outlined in a Grants Manual
- Most grants awarded via CfP with potential for follow-up grants if performing
- Coaching via regular skype calls or physical visits
- Additional feasibility study for geographical expansion (year 4)



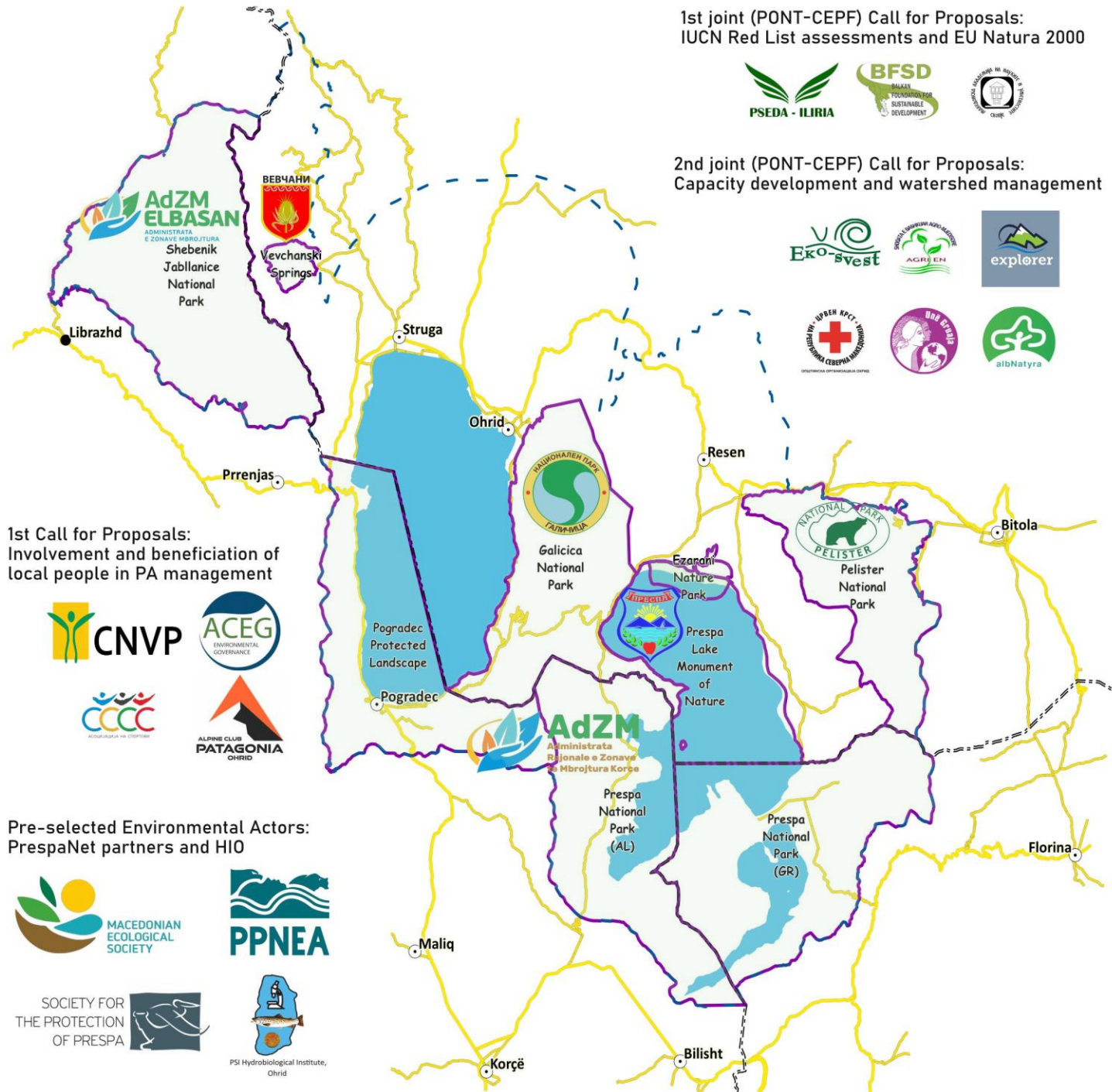
PONT Program – Partnerships



1st joint (PONT-CEPF) Call for Proposals:
IUCN Red List assessments and EU Natura 2000



2nd joint (PONT-CEPF) Call for Proposals:
Capacity development and watershed management



1st Call for Proposals:
Involvement and beneficitation of
local people in PA management



Pre-selected Environmental Actors:
PrespaNet partners and HIO



Current
Grantees



Administration



- Shared services via the Nature Trust Alliance (NTA) providing support (administration; finances; HR; IT; data protection; investments) for 4 CTFs
- Operations Manual; employee handbook and procedures in place

Asset management

- Shared/pooled Investment Committee and Investment Policy (including sustainability guidelines) of 4 CTFs under NTA



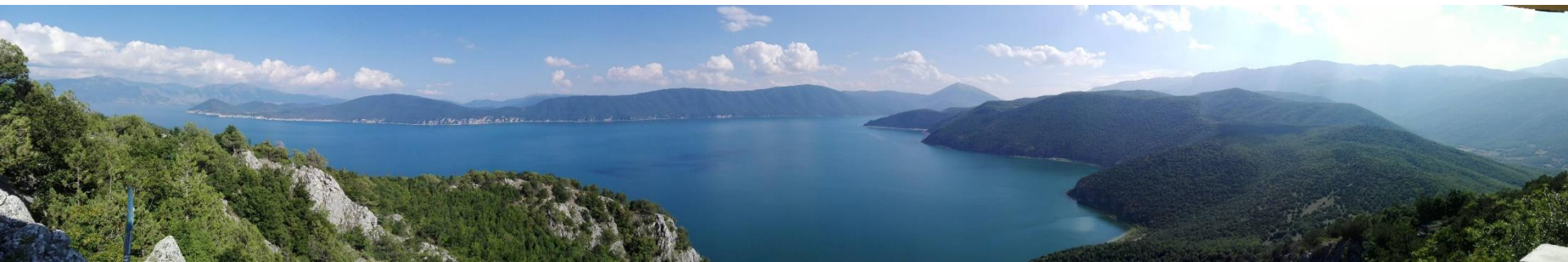


Resources Mobilisation

- Projections in Financial Model helps with fundraising (geographical expansion scenarios)
- Fundraising Strategy with targets in place

Risk Management & Safeguards

- PONT Environmental Social Management System (ESMS) under development



Thank you!

