

Resources Mobilization

KEHATI's fundraising programs include direct funding, raising funds from donor over specific projects, and fundraising through non-conventional resources.

Above is KEHATI source of fund in 2008:

Hasil pengalangan dana selama tahun 2008 tersaji pada tabel berikut :

No.	Fund Resources / Sumber Pendanaan	Amount / Jumlah Dana
1.	Funding Agency (DFID, OXFAM Hongkong, OXFAM GB, Pemerintah Finlandia, HIVOS, Ford Foundation, TIFA Foundation, Both Ends) Lembaga donor (DFID, OXFAM Hongkong, OXFAM GB, Pemerintah Finlandia, HIVOS, Ford Foundation, TIFA Foundation, Both Ends)	Rp. 14.960.024.646
2.	Withdraw from Endowment Fund Pengambilan dana investasi abadi	Rp. 7.409.900.000
3.	Management fee from KEHATI lestari mutual fund (RDKL) Biaya Manajemen pengelolaan Reksa Dana Kehati Lestari (RDKL)	Rp. 287.138.999
4.	Others (PT.Bank Mandiri, PT Taman Impian Jaya Ancol, Unilever Indonesia, Indonesian Bussines Link (IBL)) Kerjasama lain (PT.Bank Mandiri, PT Taman Impian Jaya Ancol, Unilever Indonesia, Indonesian Bussines Link (IBL))	Rp. 339.102.479
TOTAL		Rp. 22.996.166.124

Many donor places their funds in KEHATI, this includes DFID through their MFP II program with activity such as capacity building of stakeholders in the forestry sector and improving governance also in the forestry sector. Funds collected for KEHATI's campaign in climate change mitigation and adaptation effort, among others are the Ford Foundation, OXFAM Hong Kong, OXFAM Great Britain, World Bank, the Government of Finland, HIVOS, Both Ends, and TIFA Foundation. Funds from the World Bank are used exclusively to facilitate the planting of mangrove forests in Aceh.

In addition to donor agencies, many corporations and foundations commits funds to be managed by KEHATI to facilitate specific programs. These organizations include Indonesia Business Link, Coca-Cola Foundation Indonesia, Eka Cipta Foundation, Unilver Indonesia, and Taman Impian Jaya Ancol.

There are also other funds obtained, including grants from a number of companies incorporated in RDKL. In this scheme KEHATI and the partnering fund manager, Bahana, offers profit sharing system as financing mechanism.

Penggalangan Sumber Daya

Program penggalangan sumber daya KEHATI dilakukan melalui berbagai metode, yaitu pendanaan kegiatan secara langsung, penggalangan dana dari donor untuk proyek-proyek spesifik, serta penggalangan dana dari sumber-sumber non konvensional.

Donor yang menempatkan dananya di KEHATI adalah DFID dalam rangka pembiayaan program MFP II dengan kegiatan antara lain yaitu pengembangan kapasitas para pihak dalam bidang kehutanan, perbaikan tata kelola pemerintahan (*good forestry governance*). Dana yang berhasil dikumpulkan untuk pelaksanaan program-program KEHATI terkait kampanye mitigasi dan adaptasi perubahan iklim berasal dari Ford Foundation, OXFAM Hongkong, OXFAM GB, Bank Dunia, Pemerintah Finlandia, HIVOS, Both Ends, dan Yayasan TIFA. Dana dari Bank Dunia digunakan secara khusus untuk memfasilitasi penanaman hutan mangrove di Aceh.

Selain lembaga donor, banyak juga berbagai perusahaan maupun yayasan yang berafiliasi dengan perusahaan yang menempatkan dananya untuk dikelola KEHATI untuk fasilitasi program-program tertentu. Perusahaan dan organisasi terkait dunia usaha itu adalah: Indonesia Business Link, Yayasan Coca Cola Indonesia, Yayasan Eka Tjipta, Unilver Indonesia, dan Taman Impian Jaya Ancol.

Dana lain yang diperoleh KEHATI berasal dari hibah sejumlah perusahaan yang tergabung dalam Reksa RDKL. Dalam skema ini KEHATI dan lembaga pengelola dana PT. Bahana yang menjadi mitranya, menawarkan mekanisme penempatan dana dengan sistem bagi hasil.



NEW INITIATIVES
Inisiatif Baru



New Initiatives Inisiatif Baru



Sustainable Responsible Investment (SRI) KEHATI

To attract business and create forum for them, so they can take a part in biodiversity conservation and sustainable development, KEHATI initiate Sustainable Responsible Investment (SRI), stock price index that can serve as guideline or additional information for investors who are sensitive with towards social and especially environmental conservation and sustainable development to invest their capital in more responsible companies.

In 2008, KEHATI and OWW consulting (a consulting agency on CSR and SRI research based in Malaysia) had been determining certain basic principles and criteria in SRI KEHATI index. Those criteria are, initial selection, total asset, price earning ratio, free float ratio and the fundamental of SRI KEHATI. The fundamentals are:

1. Environment
2. Community
3. Corporate Governance
4. Human Rights
5. Business Behavior
6. Labor Practices & Decent Work

Since we must do a lot of research and document preparation on this Index, SRI KEHATI cant launch the Indeks for this year.



Sustainable Responsible Investment (SRI) KEHATI

Untuk merangkul dan menciptakan wadah bagi dunia usaha agar dapat turut serta pada upaya konservasi keanekaragaman hayati dan pembangunan berkelanjutan, KEHATI menginisiasi *Sustainable and Responsible Investment (SRI)*, yaitu penetapan indeks harga saham yang dapat menjadi pedoman atau informasi bagi investor yang memiliki sensitivitas terhadap kepedulian sosial khususnya pada bidang pelestarian lingkungan dan pembangunan berkelanjutan. Dengan demikian calon investor dapat dibantu untuk memilih investasi modalnya kepada perusahaan yang memiliki kinerja lingkungan dan sosial yang baik dan bertanggungjawab.

Pada tahun 2008, SRI KEHATI bersama OWW Consulting (sebuah lembaga konsultansi bergerak di bidang Tanggung Jawab Sosial Perusahaan (Corporate Social Responsibility/ CSR) dan SRI riset berbasis di Malaysia) telah menetapkan kriteria dasar dalam indeks SRI-KEHATI beserta prinsip-prinsip dasar. Kriteria tersebut berupa kriteria seleksi awal, total aset, *price earning ratio* (rasio pendapatan harga), *free float ratio* dan fundamental SRI-KEHATI. Adapun fundamental SRI-KEHATI adalah:

1. Lingkungan
2. Masyarakat
3. Tata kelola Institusi
4. Hak asasi manusia
5. Perilaku bisnis
6. Praktek-praktek ketenagakerjaan

Mengingat banyaknya dokumen dan riset mendalam yang harus dilakukan, maka indeks SRI KEHATI tidak diluncurkan pada tahun ini.

MicroFinance and Revolving Fund

"After receiving capital which we were able to use for our business activities, we save our profits so then we were able to use this money for important matters such as paying for school and other."
(Kasmawati, KSM Seujahtera)

Since the year 2006, KEHATI has been implementing programs such as KEHATI Recovery Support Fishing Sector (DPSPT-Dukungan Pemulihan Sektor Perikanan Tangkap) in cooperation with Japan Social Development Fund (JSDF)-World Bank in Aceh, after the tsunami until the end of 2008 this year. In 2008, the distribution of financial aid made to strengthen efforts to support accelerated economic recovery and economic capacity of women groups from poor fishing families of tsunami victims, has reached 11 villages in three districts whom are victims of tsunami. Since the implementation of this program more than 4000 women, members of 416 women's group from Beneficiary Society (MPM-Masyarakat Penerima Manfaat), has received the benefits.

Approaching the end of the implementation of this program, KEHATI endeavors to encourage people to be independent. This includes the attempt to form community organizations. It is expected that these organization will consistently and independently provide easy access-capital. The organization formed would be self-reliance groups (KSM-Kelompok Swadaya Masyarakat) at the village-level, from potential MPM groups.

Potential MPM groups are those that meet the sustainability criteria, which are: integrity of the group, minimum required weekly meetings, savings criteria, and the existence of economic businesses in the area. In addition, it also considers the potential funding availability. Self-reliance group (KSM) formed will be given capacity building programs in the form of management training and micro finance training. The will also be given the knowledge and practice in the rehabilitation and conservation of coastal environments. Training activities will also be followed by intensive supervision by field facilitators. Until the end of December 2008, as many as 11 KSM of 118 groups, with a total of 1236 people, have participated. These 11 KSM manages the revolving fund and distributes them to the members as soft loans. This loan will continue to revolve, thus the funds received by KSM will continue to grow and develop.

The result after six months shows that these funds can be utilized well by the KSM and the rate of return is high enough, especially in the region of Aceh, which is nearly 100 percent return. This is the result of the coaching done over two years. There are still problems of delayed payments or profits, this is because they were not able to meet their target's every week, so payments then could be made once in two weeks or a month.

Sistem Keuangan Skala Kecil

"Ban kana peng pangkai nyo kamo kajeut mepakek untuk useha, ban kana laba kamo kebah bak ketua kamo untuk pajan-pajan manteng perle napat tacok, lage perle keu aneuk miyt jak sikula ato peu-peu hai laen"
(Kasmawati, KSM Seujahtera)

"Sesudah ada modal ini kami sudah bisa pakai untuk kegiatan usaha kami, sesudah ada untungnya kami simpan di ketua kapan-kapan kami perlu uang, seperti perlu untuk sekolah anak-anak ataupun hal lainnya yang penting, dapat kami ambil"
(Kasmawati, KSM Seujahtera)

Sejak tahun 2006 KEHATI telah melaksanakan program Dukungan Pemulihan Sektor Perikanan Tangkap (DPSPT) kerjasama dengan Japan Social Development Fund (JSDF)-Bank Dunia di Aceh, pasca tsunami, hingga berakhir tahun 2008 ini. Namun pada 2008, penyaluran bantuan modal usaha dilakukan untuk penguatan ekonomi bagi mendukung percepatan pemulihan dan kemampuan ekonomi kelompok perempuan dari keluarga nelayan miskin korban tsunami pada 11 desa/Lhok di tiga kabupaten dalam skema pengelolaan organisasi dan keuangan mikro (*microfinance*). Sejak dilaksanakan hingga saat ini, terlibat lebih dari 4000 perempuan yang tergabung dalam 416 kelompok Masyarakat Penerima Manfaat (MPM).

Mendekati berakhirnya pelaksanaan program ini, KEHATI terus berupaya mendorong masyarakat agar dapat mandiri, salah satu upayanya membentuk lembaga masyarakat. Diharapkan lembaga yang terbentuk mampu menyediakan modal usaha yang mudah dan murah secara konsisten dan mandiri. Kelembagaan yang didorongkan berbentuk Kelompok Swadaya Masyarakat (KSM) ekonomi di tingkat desa yang dibentuk dari kelompok MPM potensial.

Kelompok MPM potensial adalah yang memenuhi kriteria keberlanjutan yang berupa: keutuhan kelompok, pertemuan mingguan, tabungan, dan keberadaan usaha ekonomi. Selain itu, tentunya juga mempertimbangkan kemampuan potensi pendanaannya. KSM yang terbentuk mendapatkan peningkatan kapasitas, berupa pelatihan pengelolaan organisasi dan keuangan mikro. Juga diberikan pengetahuan dan praktik dalam kegiatan rehabilitasi dan konservasi lingkungan kawasan pesisir. Kegiatan pelatihan ditindaklanjuti dengan pendampingan intensif yang dilakukan oleh fasilitator lapangan. Hingga akhir Desember 2008 sebanyak 11 KSM dengan jumlah kelompok 118, dengan anggota sebanyak 1.236 orang. Sebelas KSM mengelola dana bergulir (*revolving fund*) dan akan menyalurkan dana tersebut kepada anggotanya yang dihitung sebagai pinjaman lunak. Pinjaman ini akan terus bergulir, dengan demikian dana yang diterima KSM akan terus tumbuh dan berkembang. Hasilnya setelah enam bulan, dana tersebut dapat dimanfaatkan dengan baik oleh KSM dan tingkat pengembalian yang cukup tinggi khususnya di wilayah Nanggroe Aceh Darussalam, hampir sekitar 100 persen. Hal ini merupakan hasil dari pembinaan yang dilakukan dua tahun. Walaupun ada penundaan pembayaran, disebabkan hasil atau keuntungan usaha mereka belum cukup untuk menutup pinjaman setiap minggunya. Sehingga pembayaran dilakukan sekaligus dalam dua minggu ataupun sebulan.





Paul Hadiwinata, Hidajat, Arsono & Rekan
Registered Public Accountants
Decree of the Finance Minister of the Republic of Indonesia No. KEP-276/KM. 6/2004



No. : A/031b/DW/Ary/09

Independent Auditor's Report

Board of Trustees
Yayasan Keanekaragaman Hayati Indonesia
Indonesian Biodiversity Foundation (Yayasan KEHATI)

We have audited the statements of financial position of Yayasan Keanekaragaman Hayati Indonesia (Yayasan KEHATI) as of December 31, 2008 and 2007, the related statements of activities and cash flows for the years then ended. These financial statements are the responsibility of Yayasan KEHATI's management. Our responsibility is to express an opinion on these financial statements based on our audits.

We conducted our audits in accordance with auditing standards established by the Indonesian Institute of Certified Public Accountants. Those standards require that we plan and perform the audit to obtain reasonable assurance about whether the financial statements are free of material misstatement. An audit includes examining, on a test basis, evidence supporting the amounts and disclosures in the financial statements. An audit also includes assessing the accounting principles used and significant estimates made by management, as well as evaluating the overall financial statement presentation. We believe that our audits provide a reasonable basis for our opinion.

In our opinion, the financial statements referred to above present fairly, in all material respects, the financial position of Yayasan Keanekaragaman Hayati Indonesia (Yayasan KEHATI) as of December 31, 2008 and 2007, and the result of its activities and its cash flows for the years then ended, in conformity with generally accepted accounting principles in Indonesia.

Our audits were made for the purpose of forming an opinion on the basic financial statements taken as whole. The accompanying supplementary information is presented for the purpose of additional analysis and is not a required part of basic financial statements. Such information has been subjected to the procedures applied in the audit of basic financial statements, taken as a whole. In our opinion, the information is fairly stated in all material respects in relation to the basic financial statements taken as a whole.

Drs. Sikanto, Ak., MM
License No. 02.1.0798
Office Business License No. KEP-276/KM.6/2004

February 13, 2009

Tel + 6221 7252780 | 7201080 | 7201100 | Fax + 6221 720 3026
E-mail pkf-indo@centrin.net.id | jkt-office@pkfhadiwinata.com | www.pkfhadiwinata.com
PKF | Jl. Barito 2 No. 31 | Kebayoran Baru | Jakarta Selatan 12130 | PO. Box 4343 | Jakarta 12043 | Indonesia

Paul Hadiwinata, Hidajat, Arsono & Rekan is a member of PKF International Limited, an association of legally independent member firms.

**Yayasan Keanekaragaman Hayati Indonesia
(Indonesian Biodiversity Foundation)
Statements of financial position
As of December 31, 2008 and 2007**

(In Rupiah)			
	Note	2008	2007
Assets			
Current assets			
Cash and cash equivalents	4	8,250,704,146	6,519,005,629
Investments in managed funds	3b, 5	175,588,720,347	208,408,553,024
Other receivables		879,923,565	974,176,729
Prepaid expenditures and advances	6	1,184,789,806	795,277,211
Total current assets		185,904,137,864	216,697,012,593
Non current assets			
Fixed assets (net of accumulated depreciation amounting to Rp 1,718,395,213 in 2008 and Rp 1,471,211,118 in 2007)	3c, 7	4,714,104,091	4,967,468,771
Other assets	8	13,150,000	17,252,000
Total non current assets		4,727,254,091	4,984,720,771
Total assets		190,631,391,955	221,681,733,365

See accompanying notes to financial statements which form an integral part of these financial statements.

**Yayasan Keanekaragaman Hayati Indonesia
(Indonesian Biodiversity Foundation)
Statements of financial position (continued)
As of December 31, 2008 and 2007**

(In Rupiah)			
	Note	2008	2007
Liabilities and net assets			
Current liabilities			
Grant/collaboration payables	3d, 9	3,747,612,400	1,838,973,871
Accrued expenditures	10	152,469,231	86,652,000
Taxes payable	11	66,899,652	86,553,061
Other payables		614,611,436	794,955,025
Total current liabilities		4,581,592,719	2,807,133,957
Net assets			
Donated capital		219,398,400	219,398,400
Fund balances :			
Restricted		153,805,001,501	177,397,816,015
Unrestricted		32,025,399,335	41,257,384,992
Total net assets		186,049,799,236	218,874,599,407
Total liabilities and net assets		190,631,391,955	221,681,733,364

See accompanying notes to financial statements which form an integral part of these financial statements.

**Yayasan Keanekaragaman Hayati Indonesia
(Indonesian Biodiversity Foundation)**

Statements of activities

For the years ended December 31, 2008 and 2007

(In Rupiah)

	Note	2008			2007
		Restricted	Unrestricted	Total	
Revenues					
Grant from donors	12	14,960,024,646	-	14,960,024,646	11,889,460,931
Dividend on investments	5	1,178,876,255	-	1,178,876,255	6,728,630,635
Unrealized gain (loss) on investments - net		(47,791,941,269)	(164,605,070)	(47,956,546,339)	9,876,558,943
Unrealized gain (loss) on foreign exchange - net		19,855,251,950	205,264,352	20,060,516,302	8,839,259,121
Management fee from Reksa Dana Kehati Lestari		-	287,138,999	287,138,999	200,971,625
Interest on investments	5	1,317,146,563	-	1,317,146,563	2,656,395,440
Bank interest earned - net		82,047,701	37,857,408	119,905,109	136,889,971
Others		136,404,247	202,698,232	339,102,479	1,068,527,092
Total revenues		(10,262,189,907)	568,353,921	(9,693,835,986)	41,396,693,758
Expenditures					
Program grants	13	7,879,362,780	1,559,355,500	9,438,718,280	12,626,319,731
Consultations, collaboration and networking program	14	62,010,000	250,636,275	312,646,275	1,024,695,000
Program related expenses	15	1,435,813,052	493,948,966	1,929,762,018	1,641,714,196
General management and administrative	16	3,887,210,369	7,496,398,837	11,383,609,206	13,330,442,800
Total expenditures		13,264,396,201	9,800,339,578	23,064,735,779	28,623,171,727
Fund balance current year		(23,526,586,108)	(9,231,985,657)	(32,758,571,765)	12,773,522,031
Fund balance, beginning		177,397,816,015	41,257,384,992	218,655,201,007	205,881,678,976
Corrections	17	(66,228,406)	-	(66,228,406)	-
As corrected		177,331,587,609	41,257,384,992	218,588,972,601	205,881,678,976
Fund balance, ending		153,805,001,501	32,025,399,335	185,830,400,836	218,655,201,007

See accompanying notes to financial statements which form an integral part of these financial statements.

**Yayasan Keanekaragaman Hayati Indonesia
(Indonesian Biodiversity Foundation)**

Statements of cash flows

For the years ended December 31, 2008 and 2007

(In Rupiah)

	2008	2007
Cash flows from operating activities :		
Cash receipt from donors	14,960,024,646	11,889,460,931
Cash receipt from special event and donation	38,240,881	169,129,900
Bank interest earned	119,905,107	136,889,971
Cash receipt from others	213,861,598	599,397,192
Cash receipt from subgrantees	1,908,638,529	927,470,215
Cost for program and operational	(22,910,562,244)	(28,393,968,369)
Net cash used in operating activities	(5,669,891,483)	(14,671,620,160)
Cash flows from investing activities :		
Acquisition of fixed assets	(8,310,000)	(254,238,880)
Sale of fixed assets	-	30,000,000
Purchase of investment in marketable securities	-	(3,650,800,000)
Proceeds of investment in managed funds	7,409,900,000	14,599,800,000
Net cash provided from investing activities	7,401,590,000	10,724,761,120
Net increase (decrease) in cash and cash equivalents	1,731,698,517	(3,946,859,040)
Cash and cash equivalents, beginning	6,519,005,629	10,465,864,669
Cash and cash equivalents, ending	8,250,704,146	6,519,005,629

See accompanying notes to financial statements which form an integral part of these financial statements.

**Yayasan Keanekaragaman Hayati Indonesia
(Indonesian Biodiversity Foundation)**
Statements of cash flows (continued)
For the years ended December 31, 2008 and 2007

(In Rupiah)

	2008	2007
Non cash activities :		
Increase in investments in managed funds due to "exchange difference"	19,804,382,817	8,686,228,787
Increase (decrease) in investments in managed funds due to increase (decrease) in the investment market value	(48,570,462,129)	9,898,226,886
Increase in investments in managed funds from reinvested dividends	1,178,876,255	6,728,630,635
Increase in investments in managed funds from reinvested capital gain	1,993,356,353	-
Increase in investments in managed funds from reinvested reposweep interest	1,317,146,563	2,656,395,440
Decrease in investments in managed funds due to custodian fee	1,002,853,721	918,901,857

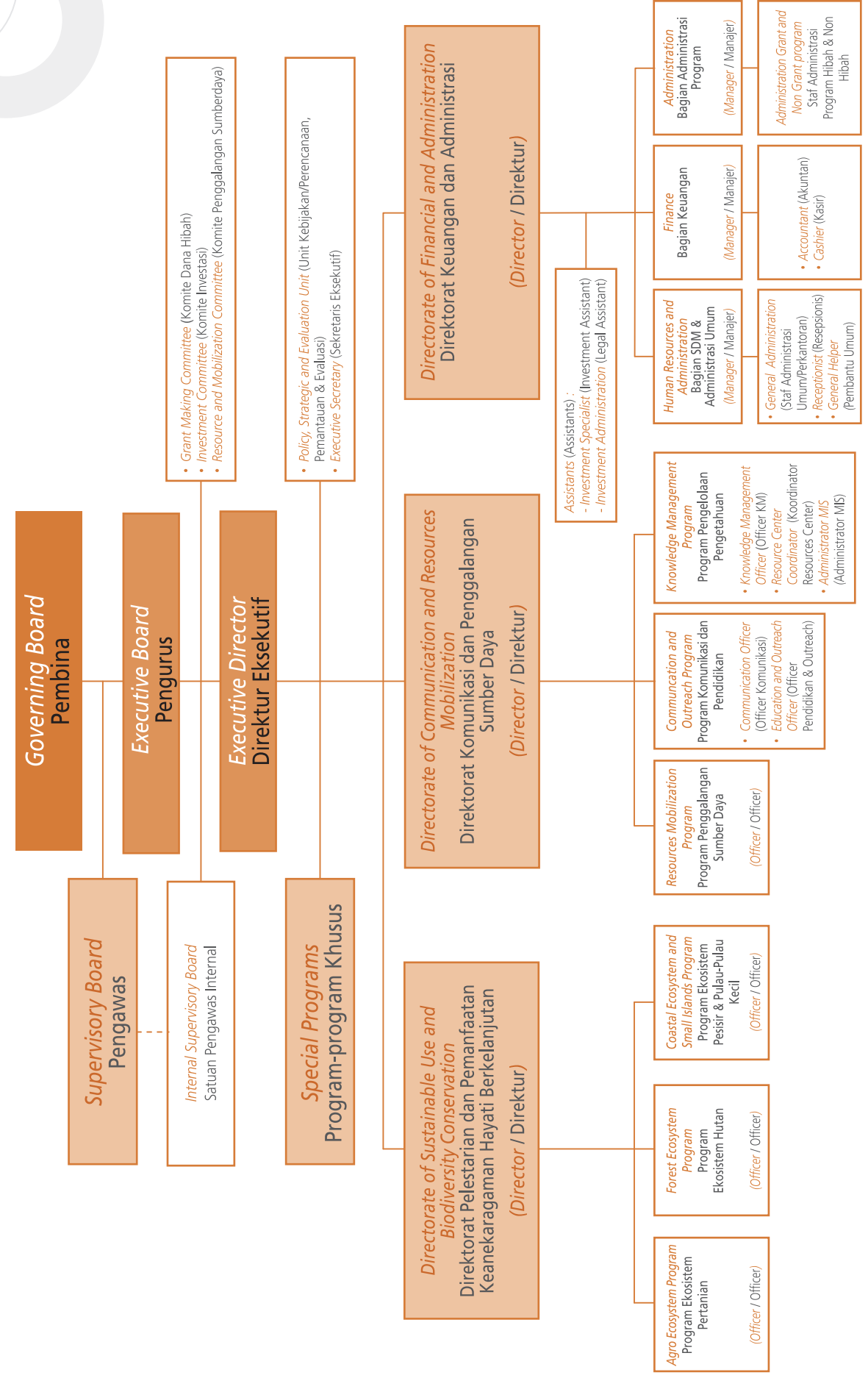
See accompanying notes to financial statements which form an integral part of these financial statements.





KEHATI's Structure of 2008

Struktur Yayasan KEHATI



Council and Board Member List

Dewan Pembina dan Pengurus Yayasan KEHATI

Board of Trustee Dewan Pembina

Ismid Hadad (*Chairman/Ketua*)
Emil Salim
Abdul Rahman Ramly
Didin Sastrapradja
Martha Tilaar
Sardono W. Kusumo
Arthur J. Hanson
Boenjamin Setiawan
Jaya Suprana

Supervisory Board Supervisor

Anton Soedjarwo (*Chairman/Ketua*)
Gunarni Soeworo
Jacobus J. Wenno
Sitanala Arsyad
Amir Abadi Jusuf

Executive Board Dewan Pelaksana

Hariadi Kartodihardjo (*Chairman/Ketua*)
Amanda Katili-Niode
Mas Achmad Santosa
Erna Witoelar
Pratiwi P. Soedharmono
Francis X. Wahono
Miranty Abidin

Grant Making Committee Komite Hibah	Investment Committee Komite Investasi	Resource Mobilization Committee Komite Penggalangan Sumber daya
Hariadi Kartodihardjo Effendy A. Soemardja Kuswata Kartawinata Bayu Krisnamurthi Dewa Ngurah Suprpta Suraya A. Afiff	Boenjamin Setiawan Gunarni Soeworo Robby Djohan Abdulgani Saidan Darwin Cyril Noerhadi Okkie Adhika Tirta Monerie	Francis X. Wahono Miranty Abidin A.A. Pranatadjaja Michael T. Tjoajadi Dedy Syahrir Panigoro

KEHATI's Partners of 2008

Daftar Mitra KEHATI, 2008

No.	Grant Receiver Mitra Penerima Hibah	Province Provinsi	Activities Kegiatan	Grant Amount Jumlah Dana Hibah
1.	Pandu Lestari Foundation Yayasan Pandu Lestari	Nusa Tenggara Timur	Learning Center Development of Sustainable farming technique and community based for renewable energy in Semau Island, Kupang District, Nusa Tenggara Timur Province Pengembangan Model Wadah Belajar Masyarakat untuk Pengelolaan Usaha tani Lestari dan Energi Terbarukan Berbasis Teknologi Kerakyatan di Pulau Semau Kabupaten Kupang Nusa Tenggara Timur	355,350,000.00
2.	Bogor Institute of Agriculture, Faculty of Human Ecology Fakultas Ekologi Manusia Institut Pertanian Bogor	West Java Jawa Barat	Responding to Climate Change Convention in Bali and landslide-flood tragedy in Indonesia Merespon Konvensi Perubahan Iklim Bali dan Bencana Banjir-Longsor di Indonesia	10,000,000.00
3.	Friend of Earth Indonesia (WAHLI) Jakarta Wahana Lingkungan Hidup Indonesia (WALHI), Jakarta	DKI Jakarta	Public Dialoged: One year of Lapindo Brantas Company Tragedy Dialog Publik: Satu Tahun Lumpur Panas PT Lapindo Brantas Inc.	3,674,000.00
4.	Indonesia Mining advocating Network Jaringan Advokasi Tambang (JATAM), Jakarta	DKI Jakarta	South to South Film Festival (Movie duplicating) (Penggandaan CD/VCD)	5,000,000.00
5.	Farmer group for Pest Control Indonesia Ikatan Petani Pengendalian Hama Terpadu Indonesia (IPPHTI)	Daerah Istimewa (DI) Yogyakarta	(National Meeting of IPPHTI) Rapat Kerja Nasional IPPHTI	10,000,000.00
6.	Plant Resources of South East Asia (PROSEA)	West Java Jawa Barat	Workshop for Agriculture and Biodiversity Resources in term of International biodiversity year Lokakarya (Workshop) Sumber Daya Hayati dan Pertanian dalam rangka memperingati Hari Keanekaragaman Hayati Internasional	5,000,000.00

No.	Grant Receiver Mitra Penerima Hibah	Province Provinsi	Activities Kegiatan	Grant Amount Jumlah Dana Hibah
7.	Community Coalition for Food Security Koalisi Rakyat untuk Kedaulatan Pangan	West Java Jawa Barat	Culture Event for Indonesian Paddy (Discussion for Anti Transgenic for Young Generation in IPB) Pekan Budaya Padi Indonesia (Diskusi Anti Transgenik untuk Kaum Muda di IPB)	5,000,000.00
8.	Indonesia Native Chicken Community (KEPRAKS)	West Java Jawa Barat	Book Published " Germplasm of Indonesian Chicken and its Use Penerbitan Buku " Mengenal Plasma Nutfah Ayam Indonesia dan Pemanfaatannya "	10,000,000.00
9.	Mita Sama Community Foundation Kelompok Swadaya Masyarakat Mita Sama	DI Aceh	Women activity for Economic Rehabilitation after Tsunami in NAD Province Dukungan Kelompok Usaha Perempuan bagi Pemulihan Ekonomi Pasca Tsunami di Propinsi NAD	22,000,000.00
10.	Demastil Community Foundation Kelompok Swadaya Masyarakat Demastil	DI Aceh	Women activity for Economic Rehabilitation after Tsunami in NAD Province Dukungan Kelompok Usaha Perempuan bagi Pemulihan Ekonomi Pasca Tsunami di Propinsi NAD	22,000,000.00
11.	Iwapila Community Foundation Kelompok Swadaya Masyarakat Iwapila	DI Aceh	Women activity for Economic Rehabilitation after Tsunami in NAD Province Dukungan Kelompok Usaha Perempuan bagi Pemulihan Ekonomi Pasca Tsunami di Propinsi NAD	22,000,000.00
12.	Mudah Rezeuki Community Foundation Kelompok Swadaya Masyarakat Mudah Rezeuki	DI Aceh	Women activity for Economic Rehabilitation after Tsunami in NAD Province Dukungan Kelompok Usaha Perempuan bagi Pemulihan Ekonomi Pasca Tsunami di Propinsi NAD	22,000,000.00
13.	Seujahtera Community Foundation Kelompok Swadaya Masyarakat Seujahtera	DI Aceh	Women activity for Economic Rehabilitation after Tsunami in NAD Province Dukungan Kelompok Usaha Perempuan bagi Pemulihan Ekonomi Pasca Tsunami di Propinsi NAD	22,000,000.00

No.	Grant Receiver Mitra Penerima Hibah	Province Provinsi	Activities Kegiatan	Grant Amount Jumlah Dana Hibah
14.	Ecological Observation and Wetland Conservation (ECOTON), Surabaya	East Java Jawa Timur	Brantas River Adoption: Conserving Brantas Watershed with Student Network for Brantas Monitoring Adopsi Brantas: Upaya Penyelamatan DAS Brantas Jaringan Pelajar Pamantau Kali Brantas	49,957,000.00
15.	Farmer Group for Pest Controlling in Indonesia Ikatan Petani Pengendalian Hama Terpadu Indonesia (IPPHTI)	Central Java Jawa Tengah	Climate Change Adaptation in North Java Sea in Dukuh Pandan Sari Desa Kaliwlingi Brebes District, Central Java Province Adaptasi Masyarakat (Nelayan/Petani) Pesisir Pantai Utara dalam Menghadapi Perubahan Iklim di Dukuh Pandan Sari Desa Kaliwlingi Kabupaten Brebes Jawa Tengah	75,125,000.00
16.	Farmer Group for Pest Controlling in Indonesia Ikatan Petani Pengendalian Hama Terpadu Indonesia (IPPHTI)	Central Java Jawa Tengah	Climate Change Adaptation in North Java Sea in Dukuh Pandan Sari Desa Kaliwlingi Brebes District, Central Java Province Adaptasi Masyarakat (Nelayan/Petani) Pesisir Pantai Utara dalam Menghadapi Perubahan Iklim di Dukuh Pandan Sari Desa Kaliwlingi Kabupaten Brebes Jawa Tengah	75,400,000.00
17.	Seraf Biodiversity Sangihe (SEHATI) Seraf Hayati Sangihe (SEHATI)	North Sulawesi Sulawesi Utara	Biodiversity Conservation in Sangihe Islands District, North Sulawesi Province Konservasi Keanekaragaman Hayati Kabupaten Kepulauan Sangihe Propinsi Sulawesi Utara	191,910,000.00
18.	Center Study of Natural resources and Marine Technology Faculty, Gajah Mada University Pusat Studi Sumber Daya dan Teknologi Kelautan Universitas Gadjah Mada (PUSTEK Kelautan-UGM)	DI Yogyakarta	Biodiversity and Sponge Bioactivity Potential in Kakaban and Maratua Islands, East Kalimantan Keanekaragaman dan Potensi Bioaktifitas Fauna Spons (Porifera) di Pulau Kakaban dan Pulau Maratua, Kalimantan Timur	103,400,000.00

No.	Grant Receiver Mitra Penerima Hibah	Province Provinsi	Activities Kegiatan	Grant Amount Jumlah Dana Hibah
19.	<i>Dua Syedara Community Foundation</i> Kelompok Swadaya Masyarakat Dua Syedara	<i>DI Aceh</i>	<i>Women activity for Economic Rehabilitation after Tsunami in NAD Province</i> Dukungan Kelompok Usaha Perempuan bagi Pemulihan Ekonomi Pasca Tsunami di Propinsi NAD	<i>22,000,000.00</i>
20.	<i>Hidup Lestari Community Foundation</i> Kelompok Swadaya Masyarakat Hidup Lestari	<i>DI Aceh</i>	<i>Women activity for Economic Rehabilitation after Tsunami in NAD Province</i> Dukungan Kelompok Usaha Perempuan bagi Pemulihan Ekonomi Pasca Tsunami di Propinsi NAD	<i>22,000,000.00</i>
21.	<i>Beu Jaya Community Foundation</i> Kelompok Swadaya Masyarakat Beu Jaya	<i>DI Aceh</i>	<i>Women activity for Economic Rehabilitation after Tsunami in NAD Province</i> Dukungan Kelompok Usaha Perempuan bagi Pemulihan Ekonomi Pasca Tsunami di Propinsi NAD	<i>22,000,000.00</i>
22.	<i>Philanthropy for Borneo Community</i> Masyarakat Filantropi Borneo (MFB)	<i>South Kalimantan</i> Kalimantan Selatan	<i>Capacity building in community foundation management</i> Penguatan Manajemen Kelembagaan	<i>74,960,000.00</i>
23.	<i>Philanthropy for Borneo Community</i> Masyarakat Filantropi Borneo (MFB)	<i>South Kalimantan</i> Kalimantan Selatan	<i>Capacity building in community foundation management</i> Penguatan Manajemen Kelembagaan	<i>27,000,000.00</i>
24.	<i>The Indonesian Institute for Forest and Environment, Bogor</i> Rimbawan Muda Indonesia (RMI)	<i>West Java</i> Jawa Barat	<i>Guidance Book for City Forest Development in Indonesia as an Effort for Biodiversity Conservation</i> Penyusunan Buku Panduan Pemilihan Jenis-Jenis Pohon untuk Membangun dan Mengembangkan Hutan Kota di Indonesia Sebagai Upaya Konservasi Keanekaragaman Hayati	<i>94,000,000.00</i>
25.	<i>Indonesian Voice</i> Sekretariat Bersama Indonesia Berseru	<i>DKI Jakarta</i>	<i>World food summit in NTT</i> NTT Food Summit dalam Rangka Hari Pangan Sedunia	<i>25,125,000.00</i>

No.	Grant Receiver Mitra Penerima Hibah	Province Provinsi	Activities Kegiatan	Grant Amount Jumlah Dana Hibah
26.	<i>Inggawi Sasamaan Organization</i> Organisasi Inggawi Sasamaan (OIS)	<i>Central Kalimantan</i> Kalimantan Tengah	<i>Slash and burn area rehabilitation by using local species of plant for raising community economic income.</i> Program Rehabilitasi Lahan Bekas Terbakar dengan Tanaman Lokal untuk Meningkatkan Ekonomi Berbasis Masyarakat	<i>150,585,000.00</i>
27.	<i>Pandu Lestari Foundation</i> Yayasan Pandu Lestari	<i>Nusa Tenggara</i> Timur	<i>Biodiversity Research in Agriculture area: the potential and planning development for alternative consumption in Semau Island, Kupang District.</i> Riset Keanekaragaman Hayati Pertanian, Potensi dan Rencana Pengembangannya untuk Pangan dan Pakan di Pulau Semau, Kabupaten Kupang	<i>63,141,000.00</i>
28.	<i>National Forestry Movement and Environment of Nadhlatul Ulama (GNKL PBNU)</i> Gerakan Nasional Kehutanan dan Lingkungan Hidup Pengurus Besar Nadhlatul Ulama (GNKL PBNU)	<i>West Java</i> Jawa Barat	<i>Forest Good Governance through Publication of Conservation management and Sustainable use of Biodiversity in Islamic Boarding School</i> Inisiatif Tata Kelola Hutan yang Baik Melalui "Pengembangan Modul Pengelolaan Konservasi & Pemanfaatan Keanekaragaman Hayati Berkelanjutan" Berbasis Pesantren	<i>140,000,000.00</i>
29.	<i>Plant Resources of South East Asia (PROSEA)</i>	<i>West Java</i> Jawa Barat	<i>Publication development "biodiversity in Agriculture for food security program"</i> Pembuatan Buku "Menangani Keanekaragaman Hayati Pertanian, Mengupayakan Terjaminnya Pangan"	<i>25,000,000.00</i>
30.	<i>Jakarta Green Monster (JGM)</i>	<i>DKI Jakarta</i>	<i>Wetland in North Jakarta (Kapuk Angke) as center of environment education in Jakarta</i> Mewujudkan Fungsi Lahan Basah Pesisir Utara Jakarta (Kapuk Angke) sebagai Pusat Pendidikan Lingkungan Hidup di Jakarta	<i>20,000,000.00</i>
31.	<i>Sumatran Elephant Foundation</i> Yayasan Gajah Sumatera (YAGASU)	<i>DKI Jakarta</i>	<i>Development of Mangrove Education Center in Jakarta</i> Pengembangan Mangrove Education Center Unit (MEC) di DKI Jakarta	<i>35,000,000.00</i>
				<i>1,730,627,000.00</i>

Program and MFP Partners in 2008

Daftar Program dan Mitra MFP Tahun 2008

No.	Partners Mitra	Program Program	Amount Jumlah Hibah
<p>Output 1. <i>TLAS as instrument of good forestry governance, sustainable forest management, and trade agreement (as in VPA) is finalized</i></p> <p>Capaian 1. Terselesainya Sistem Verifikasi Legalitas Kayu (TLAS) sebagai instrumen tata kelola kehutanan, pengelolaan hutan lestari dan perjanjian perdagangan, seperti dalam perjanjian kemitraan sukarela (VPA)</p>			
1.	Fakhrulsyah Mega	Substance mapping and multistakeholder forestry development post logging moratorium by NAD government. Pemetaan Substansi dan Perkembangan Kehutanan Multipihak Pasca Moratorium Logging oleh Pemerintah NAD	72,150,000
2.	Dewan Kehutanan Nasional (DKN)	Timber Legality Verification System Socialization (SVLK) Sosialisasi Kelembagaan Sistem Verifikasi Legalitas Kayu (SVLK)	168,700,000
3.	PMU	TLAS training Pelatihan TLAS	151,700,000
4.	Dyandra Conference Trade Forum Program	Changing International Markets for Timber What Indonesia Producers Can Do ? Merubah Pasar Internasional, apa yang dapat dilakukan oleh para produser di Indonesia	191,288,900
5.	BPK-Dephut	International Partnership Socialization in implementing the initiative of FLEGT and FLEGT-VPA negotiation Sosialisasi Kerjasama Internasional dalam Pelaksanaan Inisiatif FLEGT dan Negosiasi FLEGT-VPA	80,580,000
<p>Output 2. <i>Institutional mechanisms for dispute resolution and strengthening community roles in the forestry sector is significantly catalyzed.</i></p> <p>Capaian 2. Mekanisme kelembagaan untuk penyelesaian sengketa dan memperkuat peran komunitas dalam sektor kehutanan secara nyata mengalami kemajuan</p>			
1.	Working Group Tenure	Empowering Multistakeholders Learning process to create Rights Certainty and Community Access in Sustainable Forest Resources Management and utilization Penguatan Pembelajaran Multipihak untuk Mewujudkan Kepastian Hak dan Akses Masyarakat dalam Pengelolaan dan Pemanfaatan Sumberdaya Hutan Secara Lestari	230,650,000

No.	Partners Mitra	Program Program	Amount Jumlah Hibah
1.	Jaringan Suaka Elang	Opening remark of Suaka Elang as a conservation site alternative in Indonesia Peresmian Suaka Elang sebagai Salah Satu Alternatif Konservasi di Indonesia	19,560,000
2.	KARSA	Putting Principles of Institutionalizing Community-based Forest Management Conflict Resolution Alternative (APK-PSDHBM) Meletakkan Dasar-dasar Pelembagaan Alternatif Penyelesaian Konflik Pengelolaan Sumber Daya Hutan Berbasis Masyarakat (APK-PSDHBM)	611,650,000
<p>Output 3. <i>Best practices on forest management and governance to promote growth equity, and accountability documented</i></p> <p>Capaian 3. Terdokumentasikannya praktik pengelolaan hutan dan tata kelola yang baik untuk mempromosikan pengelolaan hutan yang berkeadilan dan bertanggungjawab</p>			
1.	Lembaga Ecolabel Indonesia	Certification grant ceremony for a Sustainable Community-based Forest Management (PHBML) Model, Adat Menua Forest Management, Sungai Utik, Kapuas Hulu District, West Kalimantan Province Penyerahan Sertifikasi Ekolabel Pengelolaan Hutan Berbasis Masyarakat Lestari (PHBML) Pengelolaan Hutan Adat Menua Sungai Utik, Kabupaten Kapuas Hulu, Propinsi Kalimantan Barat	149,351,000
2.	Lembaga Pengkajian dan Pengembangan Ekologi Pembangunan (LP2EP) Flores	Stakeholders mapping and Multistakeholders Forest Initiative, in NTT (Nusa Tenggara Timur) Pemetaan Stakeholders dan Inisiatif Kehutanan Multipihak di NTT	151,650,000
3.	Fahutan IPB Lokakarya	Workshop on: KPH development facilitation in the era of Particular Autonomy Policy of Papua region in the frame of Developing Multistakeholder Communication Fasilitas Perencanaan Pembangunan KPH dalam Era Kebijakan Otonomi Khusus Papua dalam Rangka Pengembangan Komunikasi Multipihak	117,475,000
4.	Philanthropy for Borneo Community Masyarakat Filantropi Borneo	Workshop and Strategic Planning of Reconstructing Model of Forest Management Unit (KPH) through Multistakeholder Communication in Forest Management Local Autonomy era, Kalimantan Region (South-Central) Lokakarya dan Penyusunan Renstra Indisiasi Model Rancang bangun kesatuan pemangku hutan (KPH) melalui pengembangan komunitas dalam pengelolaan kehutanan di era otonomi daerah region Kalimantan (Selatan-Tengah)	14,360,000
5.	Fakultas Kehutanan UGM	Forest and Community Week "Building a Welfare Archipelago" Pekan Raya Hutan dan Masyarakat "membangun nusantara sejahtera"	502,700,00

No.	Partners Mitra	Program Program	Amount Jumlah Hibah
6.	PT Serasi Kelola Alam (SEKALA)	<i>CBFM Potentiality Mapping in Sumatera, Java and Kalimantan</i> Pemetaan Potensi CBFM di Sumatera, Jawa dan Kalimantan	300,000,000
7.	Dephut-RLPS	<i>Service Desk Establishment for HKM, Village Forest and Community Forest</i> Pembangunan "Meja pelayanan" untuk HKM, hutan Desa dan Hutan Masyarakat	368,090,600
8.	Dephut-BPK	<i>Promoting Government Policy for Community-based Forest Plantation (HTR), through a Banner and Calendar media - Dirjen BPK</i> Mempromosikan Kebijakan Pemerintah untuk Hutan Tanaman Rakyat, melalui pencetakan banner dan calendar HTR – Dirjen BPK	95,000,000
<p>Output 4. <i>Standards and mechanisms for monitoring the improvement of corporate governance and investment performance is sufficiently facilitated</i></p> <p>Capaian 4. Terasilinasinya penyusunan standar dan mekanisme untuk pemantauan atas kemajuan tata kelola korporasi dan kinerja investasi</p>			
1.	Masyarakat Akutansi Sumberdaya alam dan Lingkungan nasional Indonesia (MASLI)	<i>The Fifth National Seminar "Optimizing Funds Utilization Through Natural Resources and Environmental Utilization Balance in Supporting Sustainable Development"</i> Seminar Nasional V "optimalisasi Pemanfaatan Pendanaan melalui Pendayaagunaan Neraca Sumber Daya Alam dan Lingkungan dalam Menunjang Pembangunan Berkelanjutan	188,000,000
<p>Output 5. <i>Improve capacity of civil society organisations to mobilise resources, engage and hold to account government and other stakeholders</i></p> <p>Capaian 5. Meningkatnya kapasitas organisasi masyarakat sipil untuk memobilisasi sumberdaya, yang menghubungkan dan menjaga hubungan antara pemerintah dan para pihak lainnya</p>			
1.	Studio Driya Media, Bandung	<i>Study of Problems, Needs and Potentiality of Information Management Programme in Establishing Communication Strategy at Four Community Foundations</i> Kajian Masalah, Kebutuhan, dan Potensi Program Pengelolaan Informasi dalam Rangka Pengembangan Strategi Komunikasi untuk Empat Community Foundation : Fund Raising; Monev; Institutional Bulding & Operasional Kantor	196,055,000
2.	<i>Inspirit Innovation Circle</i>	<i>Workshop Facilitation "Building Work relationship in Implementing Services Tasks in Community Forestry and Village Forest"</i> Fasilitasi Lokakarya "Membangun Tata Hubungan Kerja Pelaksanaan Tugas-tugas Pelayanan dalam Penyelenggaraan Hutan Kemasyarakatan dan Hutan Desa	37,200,000

No.	Partners Mitra	Program Program	Amount Jumlah Hibah
3.	<i>Inspirit Innovation Circle</i>	<i>Forest Governance, Social Change and Facilitator Short Course</i> Kursus singkat Forest Governance, social change dan fasilitator	54,360,000
4.	Institut Hukum Sumber Daya Alam (IHSA)	<i>Basic Training Policy Analysis and Natural Resources Management Law</i> Pelatihan Dasar Analisis Kebijakan dan Hukum Pengelolaan Sumber Daya Alam	248,060,000
5.	Dephut- Pusren	<i>RKTN Workshop in Yogya and Batam Region</i> Lokakarya RKTN di Regional Jogja dan Batam	375,000,000
6.	Dephut- Pusren	<i>Focused Group Discussion of climate change working group ministry of forestry internal</i> Workshop Pembahasan Kelembagaan Kehutanan Berdasarkan UU 39 Tahun 2008	76,000,000
7.	Working Goup Pemberdayaan	<i>Focused Group Discussion of climate change working group ministry of forestry internal</i> Forestry Institution Workshop based on UU 39, 2008 – Yogyakarta Focus Group Discussion Kelompok Kerja Perubahan Iklim Lingkup Departemen Kehutanan	50,350,000
8.	Dephut- Pusren	<i>RKTN workshop at Regional (PUSREN) Balikpapan</i> Lokakarya RKTN di Regional (PUSREN) Balikpapan	28,180,000
9.	Dephut-RLPS FGLG (Inspirit)	<i>FGLG (Inspirit) for workshop facilitation at RLPS-Bali</i> Fasilitasi Lokakarya RLPS-Bali	36,878,500

LIST of PUBLICATION

Daftar Publikasi

Books Buku

1. *Social Marketing: Changing Community Behavior. Andi Maerzyda A.D. Thambas, Isfahani. -- Cet. Pertama. -- Jakarta: Yayasan KEHATI, Prakarsa Penguatan Filantropi, 2008.*
Social marketing: mengubah perilaku masyarakat. Tim penyusun Andi Maerzyda A.D. Thambas, Isfahani. -- Cet. Pertama. -- Jakarta: Yayasan KEHATI, Prakarsa Penguatan Filantropi, 2008.
2. *Indonesian Chicken Germplasm and its utilization. Tike Sartika, Sofjan Iskandar. -- 2nd edition. -- Sukabumi: KEPRAKS, collaborate with Puslitbang Peternakan and KEHATI Foundation, 2008.*
Mengetahui plasma nutfah ayam Indonesia dan pemanfaatannya. Tike Sartika, Sofjan Iskandar. -- Cet. Ed. II. -- Sukabumi: KEPRAKS, bekerjasama dengan Puslitbang Peternakan dan Yayasan KEHATI, 2008.

Module Modul

1. *Microeconomic module*
Modul Ekonomi/Keuangan Mikro
2. *Management of Community Foundation Module*
Modul Pengelolaan Kelembagaan KSM
3. *Mangrove rehabilitation and conservation module*
Modul Rehabilitasi dan Konservasi Mangrove
4. *Microfinance system and Entrepreneurship*
Modul Kewirausahaan dan Akuntansi Keuangan Mikro

LIST of Management KEHATI Foundation as of 31 December 2008

Daftar Management per Desember 2008

Executive Director
Direktur Eksekutif
Damayanti Buchori

Program Director of Sustainable Biodiversity Conservation
Direktur Program Pelestarian dan Pemanfaatan Keanekaragaman Hayati Berkelanjutan
Anida Haryatmo

Finance and Administration Director
Direktur Keuangan dan Administrasi
Gustaaf A. Lumiu

Multistakeholder Forestry Program Director
Direktur Multi-Stakeholder Forestry Programme - Phase II
Diah Raharjo

Technical Adviser for Executive Director
Penasehat Teknis Direktur Eksekutif
Erwin S. Widodo

Executive Secretary for Director
Sekretariat Direksi
Myrna Yuanita

Sustainable use biodiversity Conservation program
Program Pelestarian dan Pemanfaatan Keanekaragaman Hayati Berkelanjutan
Renata Puji Sumedi Hanggarawati – Officer Program Ekosistem Pertanian (*Agro Ecosystem Officer*)
Basuki Rahmad – Officer Program Ekosistem Pesisir dan Pulau-pulau Kecil (*Coastal and Small Islands Ecosystem Officer*)

Communication and Resource mobilization program
Program Komunikasi dan Penggalangan Sumberdaya
Rika Anggraini – Manajer Penggalangan Sumberdaya (*Resource Mobilization Manager*)
Rina Kusuma – Officer Pendidikan dan Outreach (*Education and Outreach Officer*)
Indah Budiani – Officer Pengelolaan Pengetahuan (*Knowledge Management Officer*)
Lili Marliyana – Koordinator Resource Center (*Resource Center Coordinator*)
Dian Rahadian – Administrator MIS (*IT Management Administrator*)